



Saddle Operating, LLC
 Sterling Plaza
 5949 Sherry Ln, STE 1700
 Dallas, TX 75225

Non-Emergency Phone(s): 469-249-9242
 Web Site: www.saddleoperating.com

Pipeline Marker(s)



EMERGENCY NUMBER(S): 888-239-2062

How do I get additional information: 469-249-9242

About Saddle Operating, LLC

Saddle Operating is a privately held company based in Dallas, TX. Saddle is engaged in the exploration, development and production of onshore natural gas and oil properties. Saddle currently operates the Buffalo gas pipeline located in Tarrant County.

What does Saddle Operating do if a leak occurs?

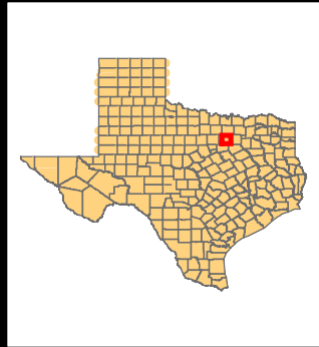
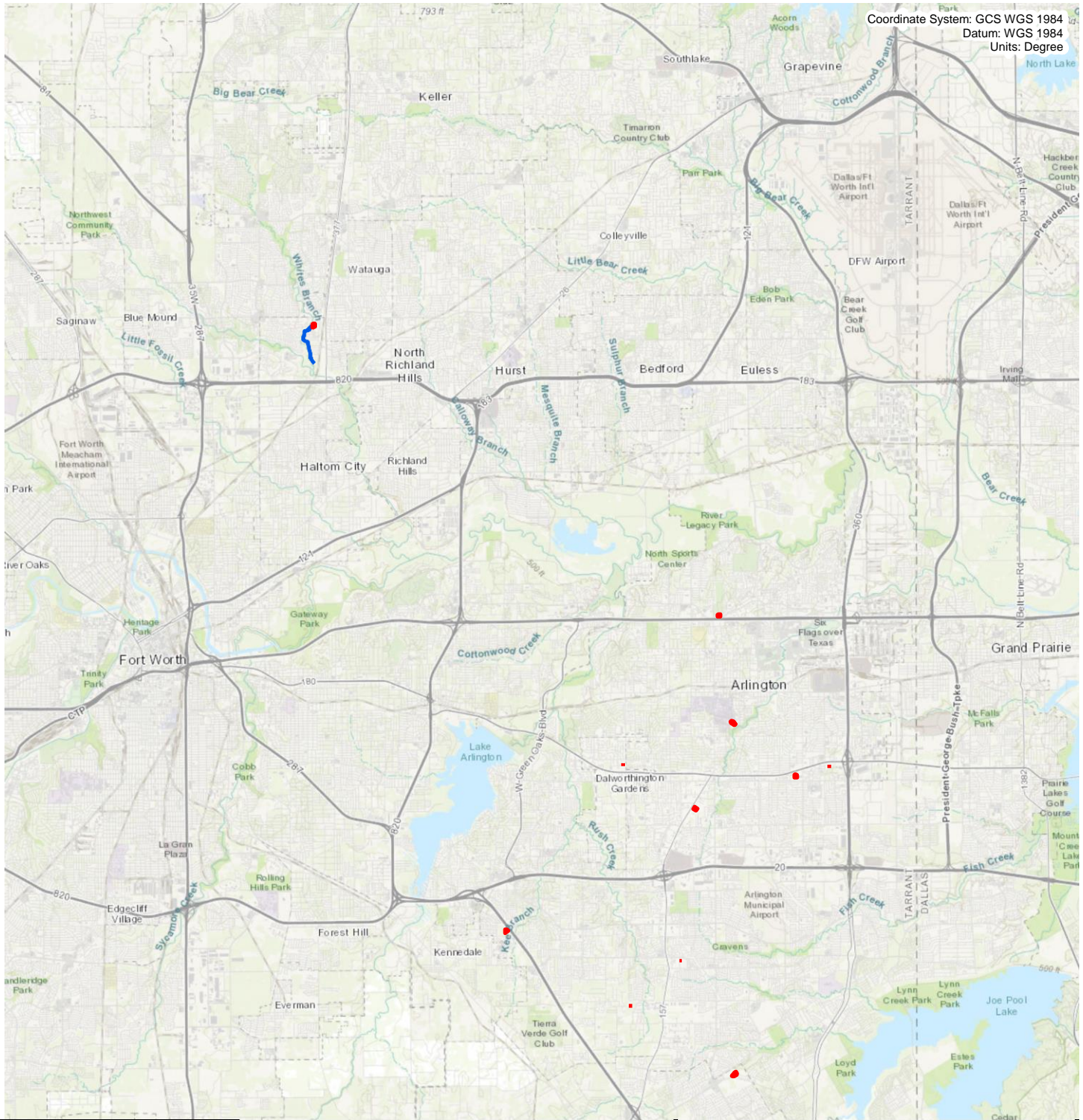
To prepare for the event of a leak, Saddle Operating regularly communicates, plans and trains with local emergency responders. Upon the notification of an incident or leak, Saddle Operating will immediately dispatch trained personnel to assist emergency responders. Saddle Operating and emergency responders are trained to protect life, property and facilities in the case of an emergency. Saddle Operating will also take steps to minimize the amount of product that leaks out and to isolate the pipeline emergency.

Maintaining safety and integrity of pipelines

Saddle Operating invests significant time and capital maintaining the quality and integrity of their pipeline systems. Saddle Operating also utilizes leak surveys and on-ground observers to identify potential dangers. Pipeline personnel continually monitor the pipeline system and assess changes in pressure and flow. They notify field personnel if there is a possibility of a leak. Automatic shut-off valves are sometimes utilized to isolate a leak.

Products Transported and Counties Involved

Product	Description	Health and Fire Hazards	Counties Involved
Natural Gas	<p>Leak Type: Gas</p> <p>Vapor: Lighter than Air</p> <p>Very flammable and a white vapor cloud may be visible near the site of a leak.</p>	<p>Health: Extremely high concentrations may cause irritation or asphyxiation.</p> <p>Fire Hazards: Extremely flammable and easily ignited by heat, sparks or flames.</p>	Tarrant



Legend

- Buffalo Gathering 6" Centerline
- Saddle Well Pads

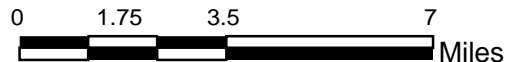


Figure 1
 Overview Map
 Buffalo 6" Gas Gathering Pipeline and Well Pads
 Tarrant County, TX

Prepared for: Saddle Operating, LLC

Prepared By: B. Black

Date: 10/30/2017

Service Layer Credits: Sources: Esri, HERE, DeLorme, Intermap, increment P Corp., GEBCO, USGS, FAO, NPS, NRCAN, GeoBase, IGN, Kadaster NL, Ordnance Survey, Esri Japan, METI, Esri China (Hong Kong), swisstopo, MapmyIndia, © OpenStreetMap contributors, and the GIS User Community